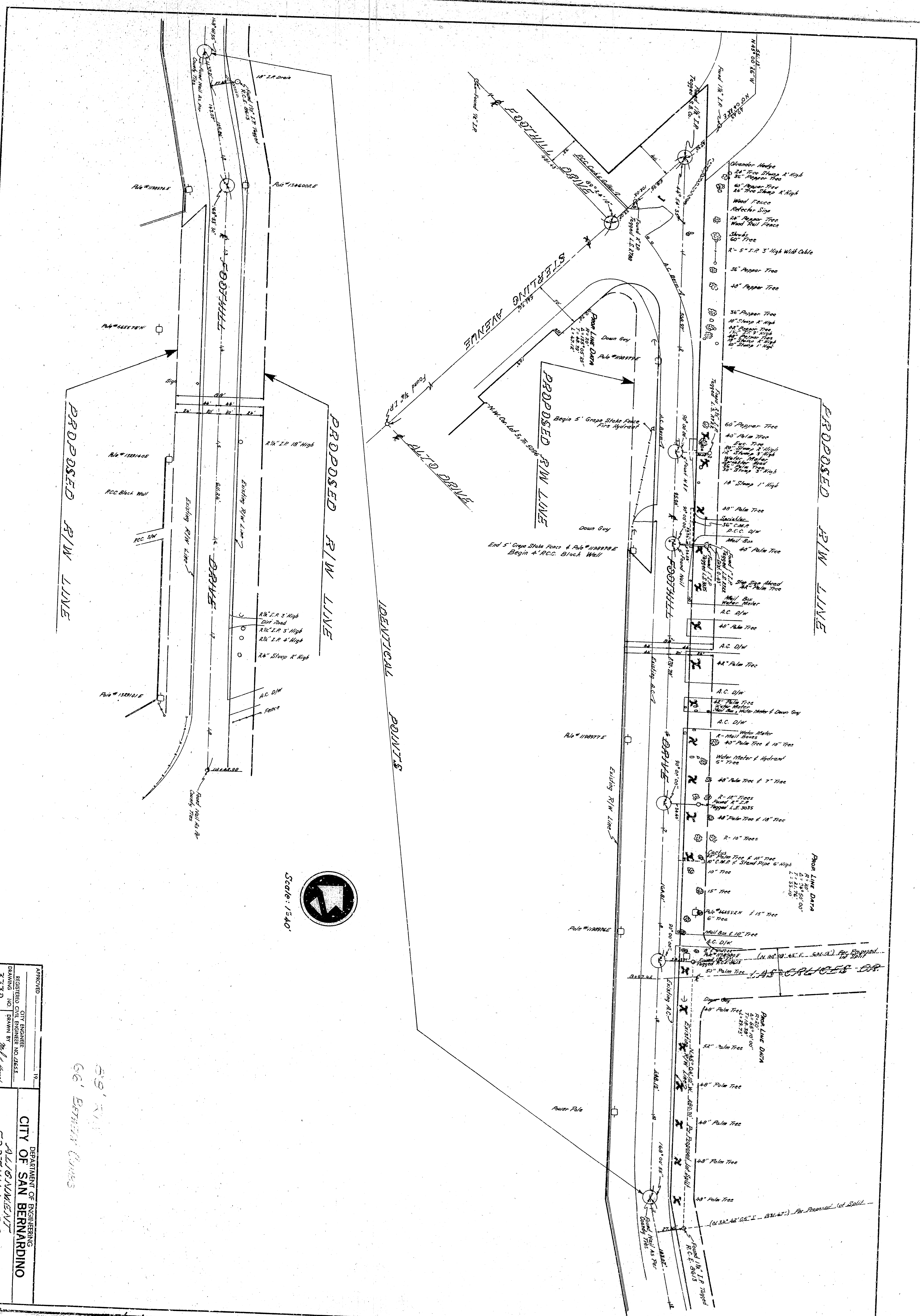


Scale: 1/4"

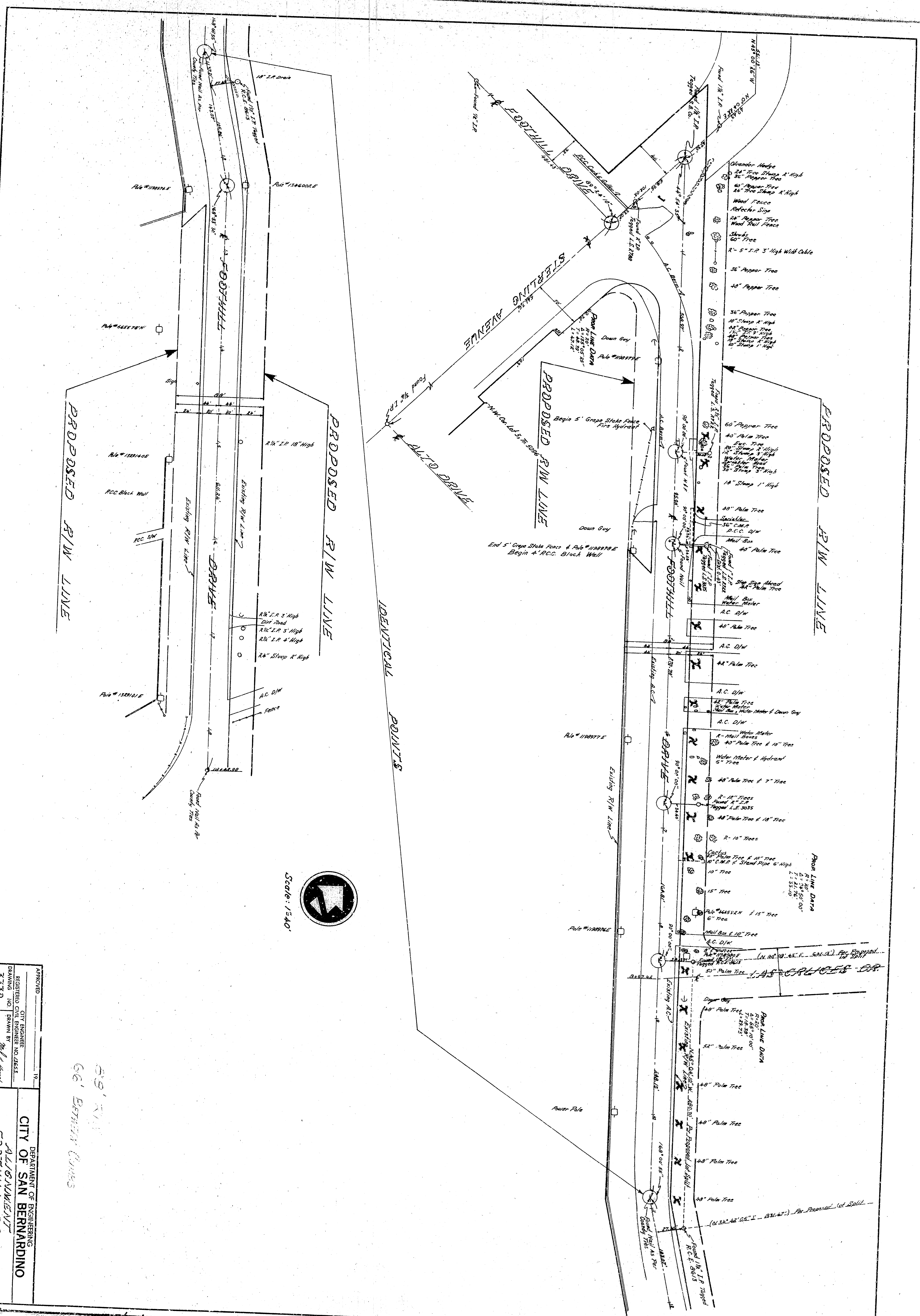
59' R/W  
66' Between Curves

APPROVED	CITY ENGINEER
REGISTERED CIVIL ENGINEER NO. 48533	
DRAWING NO. 3330	DRAWN BY
CHECKED BY	
SHEET 1 OF 1	RECOMMENDED
CITY OF SAN BERNARDINO DEPARTMENT OF ENGINEERING	
ALIGNMENT FOOT HILL DRIVE STERPLING AVENUE TO A POINT 18+92.93 EAST	



APPROVED	CITY ENGINEER
REGISTERED CIVIL ENGINEER NO. 48533	
DRAWING NO. 3330	DRAWN BY
SHEET 1 OF 1	CHECKED BY
RECOMMENDED	
CITY OF SAN BERNARDINO DEPARTMENT OF ENGINEERING	
ALIGNMENT FOOT HILL DRIVE STERPLING AVENUE TO A POINT 18+92.93 EAST	

59' R/W  
66' BETWEEN CURVES



Scale: 1/4" = 1'-0"

APPROVED	CITY ENGINEER
REGISTERED CIVIL ENGINEER NO. 48533	
DRAWING NO. 3330	DRAWN BY
CHECKED BY	
SHEET 1 OF 1	RECOMMENDED
CITY OF SAN BERNARDINO	
DEPARTMENT OF ENGINEERING	
ALIGNMENT	
FOOT HILL DRIVE	
STERLING AVENUE DRIVE TO	
A POINT 18+92.93 EAST	

59' R/W  
66' BETWEEN CURVES